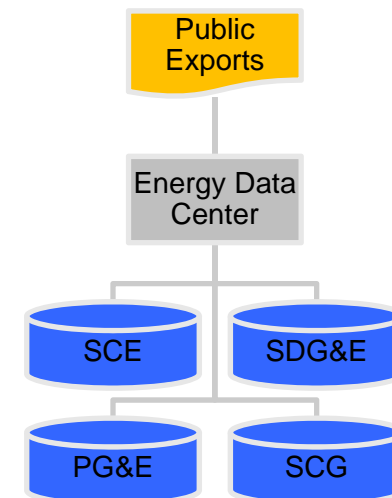
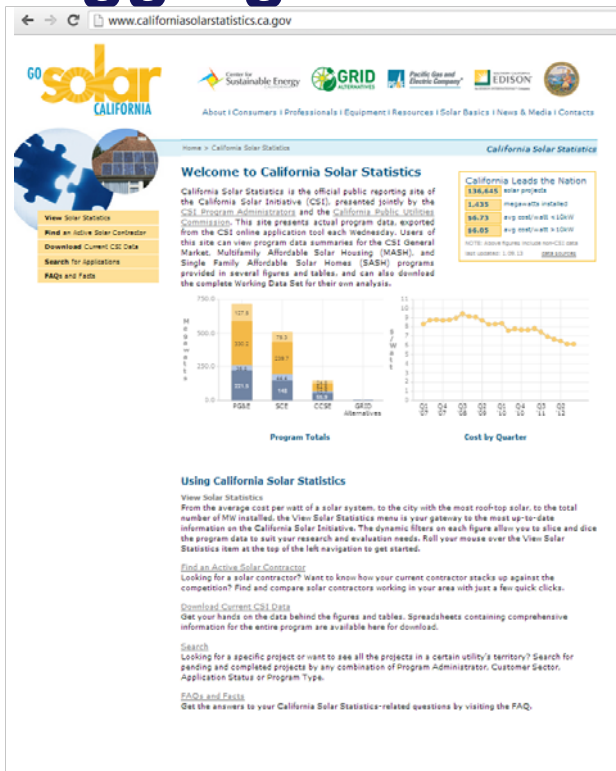


Aggregated and Anonymous Data

- The Energy Data Center should collect, aggregate and anonymize data in such a way that it:
 - Protects customer confidentiality;
 - Provides benefits to ratepayers, and;
 - Support academic and industry research.



Data Anonymization versus Aggregation



www.californiasolarstatistics.ca.gov

GO solar CALIFORNIA

About | Consumers | Professionals | Equipment | Resources | Solar Basics | News & Media | Contacts

Home » California Solar Statistics

Welcome to California Solar Statistics

California Solar Statistics is the official public reporting site of the California Solar Initiative (CSI), presented jointly by the CSI Program Administrators and the California Public Utilities Commission. This site presents actual program data, exported from the CSI online application tool each Wednesday. Users of this site can view program data summaries for the CSI, General Market, Multifamily Affordable Solar Housing (MASH), and Single Family Affordable Solar Homes (SASH) programs provided in several figures and tables, and can also download the complete Working Data Set for their own analysis.

California Leads the Nation
1,838,845 solar projects
16,773 megawatts installed
16,652 megawatts in 100W
NOTE: SOURCE: NATIONAL RENEWABLE ENERGY LABORATORY | 1.16.13 | 0013102108

Program Totals

Cost by Quarter

Using California Solar Statistics

View Solar Statistics
 From the average cost per watt of a solar system, to the city with the most rooftop solar, to the total number of MW installed, the View Solar Statistics menu is your gateway to the most up-to-date information on the California Solar Initiative. The dynamic filters on each figure allow you to slice and dice the program data to suit your research and evaluation needs. Roll your mouse over the View Solar Statistics item at the top of the left navigation to get started.

Find an Active Solar Contractor
 Looking for a solar contractor? Want to know how your current contractor stacks up against the competition? Find and compare solar contractors working in your area with just a few quick clicks.

Download Current CSI Data
 Get your hands on the data behind the figures and tables. Spreadsheets containing comprehensive information for the entire program are available here for download.

Search
 Looking for a specific project or want to see all the projects in a certain utility's territory? Search for pending and completed projects by any combination of Program Administrator, Customer Sector, Application Status or Program Type.

FAQ and News
 Get the answers to your California Solar Statistics-related questions by visiting the FAQ.

Aggregate Data



Anonymized Data

Application Number	Program	Program Administrator	Customer Sector	System Size (kW)	System Size (MW)	Total Cost (\$)	Cost per kW (\$)	Design Fee (\$)	Permitting Fee (\$)	Interconnection Fee (\$)	System Owner	System Administrator	County	City	Zip	Year	Quarter	Status
10-10-00000	CSI	Small Con (\$0.20 per kWh)	Step 1	3466	0	2,656	0.765	0.000	0.000	0.000	Residential	Residential	San Diego	San Diego	92101	2010	Q1	Completed
10-10-00001	CSI	Small Con (\$0.20 per kWh)	Step 1	2044	0.2044	2	0.99	0.000	0.000	0.000	Residential	Residential	San Diego	San Diego	92101	2010	Q1	Completed
10-10-00002	CSI	Small Con (\$0.20 per kWh)	Step 1	1020	0.0000	0	0.00	0.000	0.000	0.000	Residential	Residential	San Diego	San Diego	92101	2010	Q1	Completed
10-10-00003	CSI	Small Con (\$0.20 per kWh)	Step 1	2046	0.0076	0.00	0.00	0.000	0.000	0.000	Residential	Residential	San Diego	San Diego	92101	2010	Q1	Completed
10-10-00004	CSI	Small Con (\$0.20 per kWh)	Step 1	7024	0.0000	0	0.00	0.000	0.000	0.000	Residential	Residential	San Diego	San Diego	92101	2010	Q1	Completed
10-10-00005	CSI	Small Con (\$0.20 per kWh)	Step 1	1024	0.0000	0	0.00	0.000	0.000	0.000	Residential	Residential	San Diego	San Diego	92101	2010	Q1	Completed
10-10-00006	CSI	Small Con (\$0.20 per kWh)	Step 1	1024	0.0000	0	0.00	0.000	0.000	0.000	Residential	Residential	San Diego	San Diego	92101	2010	Q1	Completed
10-10-00007	CSI	Small Con (\$0.20 per kWh)	Step 1	1024	0.0000	0	0.00	0.000	0.000	0.000	Residential	Residential	San Diego	San Diego	92101	2010	Q1	Completed
10-10-00008	CSI	Small Con (\$0.20 per kWh)	Step 1	1024	0.0000	0	0.00	0.000	0.000	0.000	Residential	Residential	San Diego	San Diego	92101	2010	Q1	Completed
10-10-00009	CSI	Small Con (\$0.20 per kWh)	Step 1	1024	0.0000	0	0.00	0.000	0.000	0.000	Residential	Residential	San Diego	San Diego	92101	2010	Q1	Completed
10-10-00010	CSI	Small Con (\$0.20 per kWh)	Step 1	1024	0.0000	0	0.00	0.000	0.000	0.000	Residential	Residential	San Diego	San Diego	92101	2010	Q1	Completed
10-10-00011	CSI	Small Con (\$0.20 per kWh)	Step 1	1024	0.0000	0	0.00	0.000	0.000	0.000	Residential	Residential	San Diego	San Diego	92101	2010	Q1	Completed
10-10-00012	CSI	Small Con (\$0.20 per kWh)	Step 1	1024	0.0000	0	0.00	0.000	0.000	0.000	Residential	Residential	San Diego	San Diego	92101	2010	Q1	Completed
10-10-00013	CSI	Small Con (\$0.20 per kWh)	Step 1	1024	0.0000	0	0.00	0.000	0.000	0.000	Residential	Residential	San Diego	San Diego	92101	2010	Q1	Completed
10-10-00014	CSI	Small Con (\$0.20 per kWh)	Step 1	1024	0.0000	0	0.00	0.000	0.000	0.000	Residential	Residential	San Diego	San Diego	92101	2010	Q1	Completed
10-10-00015	CSI	Small Con (\$0.20 per kWh)	Step 1	1024	0.0000	0	0.00	0.000	0.000	0.000	Residential	Residential	San Diego	San Diego	92101	2010	Q1	Completed
10-10-00016	CSI	Small Con (\$0.20 per kWh)	Step 1	1024	0.0000	0	0.00	0.000	0.000	0.000	Residential	Residential	San Diego	San Diego	92101	2010	Q1	Completed
10-10-00017	CSI	Small Con (\$0.20 per kWh)	Step 1	1024	0.0000	0	0.00	0.000	0.000	0.000	Residential	Residential	San Diego	San Diego	92101	2010	Q1	Completed
10-10-00018	CSI	Small Con (\$0.20 per kWh)	Step 1	1024	0.0000	0	0.00	0.000	0.000	0.000	Residential	Residential	San Diego	San Diego	92101	2010	Q1	Completed
10-10-00019	CSI	Small Con (\$0.20 per kWh)	Step 1	1024	0.0000	0	0.00	0.000	0.000	0.000	Residential	Residential	San Diego	San Diego	92101	2010	Q1	Completed
10-10-00020	CSI	Small Con (\$0.20 per kWh)	Step 1	1024	0.0000	0	0.00	0.000	0.000	0.000	Residential	Residential	San Diego	San Diego	92101	2010	Q1	Completed
10-10-00021	CSI	Small Con (\$0.20 per kWh)	Step 1	1024	0.0000	0	0.00	0.000	0.000	0.000	Residential	Residential	San Diego	San Diego	92101	2010	Q1	Completed
10-10-00022	CSI	Small Con (\$0.20 per kWh)	Step 1	1024	0.0000	0	0.00	0.000	0.000	0.000	Residential	Residential	San Diego	San Diego	92101	2010	Q1	Completed
10-10-00023	CSI	Small Con (\$0.20 per kWh)	Step 1	1024	0.0000	0	0.00	0.000	0.000	0.000	Residential	Residential	San Diego	San Diego	92101	2010	Q1	Completed
10-10-00024	CSI	Small Con (\$0.20 per kWh)	Step 1	1024	0.0000	0	0.00	0.000	0.000	0.000	Residential	Residential	San Diego	San Diego	92101	2010	Q1	Completed
10-10-00025	CSI	Small Con (\$0.20 per kWh)	Step 1	1024	0.0000	0	0.00	0.000	0.000	0.000	Residential	Residential	San Diego	San Diego	92101	2010	Q1	Completed
10-10-00026	CSI	Small Con (\$0.20 per kWh)	Step 1	1024	0.0000	0	0.00	0.000	0.000	0.000	Residential	Residential	San Diego	San Diego	92101	2010	Q1	Completed
10-10-00027	CSI	Small Con (\$0.20 per kWh)	Step 1	1024	0.0000	0	0.00	0.000	0.000	0.000	Residential	Residential	San Diego	San Diego	92101	2010	Q1	Completed
10-10-00028	CSI	Small Con (\$0.20 per kWh)	Step 1	1024	0.0000	0	0.00	0.000	0.000	0.000	Residential	Residential	San Diego	San Diego	92101	2010	Q1	Completed
10-10-00029	CSI	Small Con (\$0.20 per kWh)	Step 1	1024	0.0000	0	0.00	0.000	0.000	0.000	Residential	Residential	San Diego	San Diego	92101	2010	Q1	Completed
10-10-00030	CSI	Small Con (\$0.20 per kWh)	Step 1	1024	0.0000	0	0.00	0.000	0.000	0.000	Residential	Residential	San Diego	San Diego	92101	2010	Q1	Completed
10-10-00031	CSI	Small Con (\$0.20 per kWh)	Step 1	1024	0.0000	0	0.00	0.000	0.000	0.000	Residential	Residential	San Diego	San Diego	92101	2010	Q1	Completed
10-10-00032	CSI	Small Con (\$0.20 per kWh)	Step 1	1024	0.0000	0	0.00	0.000	0.000	0.000	Residential	Residential	San Diego	San Diego	92101	2010	Q1	Completed
10-10-00033	CSI	Small Con (\$0.20 per kWh)	Step 1	1024	0.0000	0	0.00	0.000	0.000	0.000	Residential	Residential	San Diego	San Diego	92101	2010	Q1	Completed
10-10-00034	CSI	Small Con (\$0.20 per kWh)	Step 1	1024	0.0000	0	0.00	0.000	0.000	0.000	Residential	Residential	San Diego	San Diego	92101	2010	Q1	Completed
10-10-00035	CSI	Small Con (\$0.20 per kWh)	Step 1	1024	0.0000	0	0.00	0.000	0.000	0.000	Residential	Residential	San Diego	San Diego	92101	2010	Q1	Completed
10-10-00036	CSI	Small Con (\$0.20 per kWh)	Step 1	1024	0.0000	0	0.00	0.000	0.000	0.000	Residential	Residential	San Diego	San Diego	92101	2010	Q1	Completed
10-10-00037	CSI	Small Con (\$0.20 per kWh)	Step 1	1024	0.0000	0	0.00	0.000	0.000	0.000	Residential	Residential	San Diego	San Diego	92101	2010	Q1	Completed
10-10-00038	CSI	Small Con (\$0.20 per kWh)	Step 1	1024	0.0000	0	0.00	0.000	0.000	0.000	Residential	Residential	San Diego	San Diego	92101	2010	Q1	Completed
10-10-00039	CSI	Small Con (\$0.20 per kWh)	Step 1	1024	0.0000	0	0.00	0.000	0.000	0.000	Residential	Residential	San Diego	San Diego	92101	2010	Q1	Completed
10-10-00040	CSI	Small Con (\$0.20 per kWh)	Step 1	1024	0.0000	0	0.00	0.000	0.000	0.000	Residential	Residential	San Diego	San Diego	92101	2010	Q1	Completed
10-10-00041	CSI	Small Con (\$0.20 per kWh)	Step 1	1024	0.0000	0	0.00	0.000	0.000	0.000	Residential	Residential	San Diego	San Diego	92101	2010	Q1	Completed
10-10-00042	CSI	Small Con (\$0.20 per kWh)	Step 1	1024	0.0000	0	0.00	0.000	0.000	0.000	Residential	Residential	San Diego	San Diego	92101	2010	Q1	Completed
10-10-00043	CSI	Small Con (\$0.20 per kWh)	Step 1	1024	0.0000	0	0.00	0.000	0.000	0.000	Residential	Residential	San Diego	San Diego	92101	2010	Q1	Completed
10-10-00044	CSI	Small Con (\$0.20 per kWh)	Step 1	1024	0.0000	0	0.00	0.000	0.000	0.000	Residential	Residential	San Diego	San Diego	92101	2010	Q1	Completed
10-10-00045	CSI	Small Con (\$0.20 per kWh)	Step 1	1024	0.0000	0	0.00	0.000	0.000	0.000	Residential	Residential	San Diego	San Diego	92101	2010	Q1	Completed
10-10-00046	CSI	Small Con (\$0.20 per kWh)	Step 1	1024	0.0000	0	0.00	0.000	0.000	0.000	Residential	Residential	San Diego	San Diego	92101	2010	Q1	Completed
10-10-00047	CSI	Small Con (\$0.20 per kWh)	Step 1	1024	0.0000	0	0.00	0.000	0.000	0.000	Residential	Residential	San Diego	San Diego	92101	2010	Q1	Completed
10-10-00048	CSI	Small Con (\$0.20 per kWh)	Step 1	1024	0.0000	0	0.00	0.000	0.000	0.000	Residential	Residential	San Diego	San Diego	92101	2010	Q1	Completed
10-10-00049	CSI	Small Con (\$0.20 per kWh)	Step 1	1024	0.0000	0	0.00	0.000	0.000	0.000	Residential	Residential	San Diego	San Diego	92101	2010	Q1	Completed
10-10-00050	CSI	Small Con (\$0.20 per kWh)	Step 1	1024	0.0000	0	0.00	0.000	0.000	0.000	Residential	Residential	San Diego	San Diego	92101	2010	Q1	Completed
10-10-00051	CSI	Small Con (\$0.20 per kWh)	Step 1	1024	0.0000	0	0.00	0.000	0.000	0.000	Residential	Residential	San Diego	San Diego	92101	2010	Q1	Completed
10-10-00052	CSI	Small Con (\$0.20 per kWh)	Step 1	1024	0.0000	0	0.00	0.000	0.000	0.000	Residential	Residential	San Diego	San Diego	92101	2010	Q1	Completed
10-10-00053	CSI	Small Con (\$0.20 per kWh)	Step 1	1024	0.0000	0	0.00	0.000	0.000	0.000	Residential	Residential	San Diego	San Diego	92101	2010	Q1	Completed
10-10-00054	CSI	Small Con (\$0.20 per kWh)	Step 1	1024	0.0000	0	0.00	0.000	0.000	0.00								

Anonymized Data - CSS

	A	B	C	D	E	F	G	H	I	J	K	L	M	N	O	P	Q	R	S	T	U	V	W
1	Application Number	Program #	Program	Incentive	Incentive	Incentive	Incentive	Total Cost	Nameplat	CEC PTC R	Design Fa	CSI Rating	Current Incentive A	System O	System O	Host Cust	Host Cust	Host Cust	Host Cust	Host Cust	First New Rese	First Online	First Re
2	SD-CSI-03095	CCSE	Small Con	\$1.55 per	EPBB	Step 5	3446	0	2.816	2.286	0.97227	2.223	Cancelled	Residential	Residenti	Downey	Los Angel	CA	90242	6/29/2009	6/30/2009	7/9/	
3	SD-CSI-03355	CCSE	Small Con	98.184% @	EPBB	98.184% @	2424	22541.08	2	1.585	0.99176	1.572	Cancelled	Residential	Residenti	Rancho Pa	Los Angel	CA	90275	8/12/2009	8/12/2009	8/19/	
4	SD-CSI-00662	CCSE	Small Con	\$2.20 per	EPBB	Step 3	9520	29697.05	4.56	3.808	0.99898	3.804	Cancelled	Residential	Residenti	Alpine	San Diego	CA	91901	12/3/2007	1/10/2008	1/21/	
5	SD-CSI-10370	CCSE	Small Con	\$0.25 per	EPBB	Step 9a	2546	39676	11.96	10.478	0.97183	10.183	Completed	Residential	Residenti	Alpine	San Diego	CA	91901	9/24/2011		9/25/	
6	SD-CSI-04923	CCSE	Small Con	\$0.15 per	FiveYearP	Step 6	7118	40643	6.44	5.538	0.9782	5.417	PBI - In Payment	Residential	Residenti	Alpine	San Diego	CA	91901	12/22/2009	12/22/2009	12/23/	
7	SD-CSI-14988	CCSE	Small Con	\$0.20 per	EPBB	Step 10	1358	30895	7.92	6.792	1	6.792	Pending Payment	Residential	Residenti	Alpine	San Diego	CA	91901	10/4/2012		10/7/	
8	SD-CSI-02017	CCSE	Small Con	\$1.90 per	EPBB	Step 4	7456	38250	4.5	3.976	0.98703	3.924	Completed	Residential	Residenti	Alpine	San Diego	CA	91901	12/19/2008	12/19/2008	12/22/	
9	SD-CSI-10900	CCSE	Small Con	\$0.25 per	EPBB	Step 9a	954	23460	4.452	3.937	0.96989	3.818	Completed	Commercial	Residenti	Alpine	San Diego	CA	91901	10/24/2011		11/22/	
10	SD-CSI-06276	CCSE	Small Con	\$0.65 per	EPBB	Step 7	1869	19436	3.36	2.915	0.98653	2.876	Completed	Commercial	Residenti	Alpine	San Diego	CA	91901	5/14/2010	5/14/2010	5/14/	
11	SD-CSI-01581	CCSE	Small Con	\$2.20 per	EPBB	Step 3	12019	55475	7.128	5.815	0.93951	5.463	Completed	Residential	Residenti	Alpine	San Diego	CA	91901	9/10/2008	9/12/2008	9/15/	
12	SD-CSI-01584	CCSE	Small Con	\$2.20 per	EPBB	Step 3	19166	77976	10.368	8.733	0.99757	8.712	Completed	Residential	Residenti	Alpine	San Diego	CA	91901			9/15/	
13	SD-CSI-08283	CCSE	Small Con	\$0.35 per	EPBB	Step 8a	984	24707	3.29	2.845	0.98762	2.81	Completed	Commercial	Residenti	Alpine	San Diego	CA	91901	2/3/2011		2/8/	
14	SD-CSI-03457	CCSE	Small Con	\$1.55 per	EPBB	Step 5	3743	42336	3.024	2.448	0.98669	2.415	Completed	Commercial	Residenti	Alpine	San Diego	CA	91901	7/28/2009	8/24/2009	8/27/	
15	SD-CSI-08043	CCSE	Small Con	\$0.35 per	EPBB	Step 8a	1657	35461	5.64	4.852	0.9754	4.733	Completed	Residential	Residenti	Alpine	San Diego	CA	91901	12/15/2010		12/15/	
16	SD-CSI-12759	CCSE	Small Con	\$0.20 per	EPBB	Step 10	1565	58300	9.156	8.102	0.9657	7.824	Completed	Commercial	Residenti	Alpine	San Diego	CA	91901	4/13/2012		5/9/	
17	SD-CSI-10597	CCSE	Small Con	\$0.25 per	EPBB	Step 9a	819	35740	3.84	3.341	0.98047	3.276	Completed	Residential	Residenti	Alpine	San Diego	CA	91901	8/9/2011		10/21/	
18	SD-CSI-08988	CCSE	Small Con	\$0.35 per	EPBB	Step 8a	913	18635	3.055	2.627	0.99296	2.609	Completed	Residential	Residenti	Alpine	San Diego	CA	91901	5/2/2011		5/18/	
19	SD-CSI-10299	CCSE	Small Con	\$0.25 per	EPBB	Step 9a	1200	29812	5.52	4.799	0.99979	4.798	Completed	Commercial	Residenti	Alpine	San Diego	CA	91901	9/7/2011		9/15/	
20	SD-CSI-05672	CCSE	Small Con	\$1.10 per	EPBB	Step 6	4415	26177	4.7	4.065	0.98743	4.014	Completed	Commercial	Residenti	Alpine	San Diego	CA	91901	3/22/2010	3/22/2010	3/22/	
21	SD-CSI-10302	CCSE	Small Con	\$0.25 per	EPBB	Step 9a	1104	36267	5.17	4.454	0.99173	4.417	Completed	Residential	Residenti	Alpine	San Diego	CA	91901	9/7/2011		9/15/	
22	SD-CSI-08051	CCSE	Small Con	\$0.35 per	EPBB	Step 8a	2545	44860	8.568	7.395	0.98327	7.271	Completed	Residential	Residenti	Alpine	San Diego	CA	91901	12/14/2010		12/16/	
23	SD-CSI-09771	CCSE	Small Con	\$0.35 per	EPBB	Step 8a	5580	105356.1	18.24	15.964	0.9987	15.943	Completed	Residential	Residenti	Alpine	San Diego	CA	91901	8/11/2011		8/11/	
24	SD-CSI-07975	CCSE	Small Con	\$0.35 per	EPBB	Step 8a	905	23950	3.01	2.59	0.99813	2.585	Completed	Residential	Residenti	Alpine	San Diego	CA	91901	11/27/2010		12/1/	
25	SD-CSI-10310	CCSE	Small Con	97.911% @	EPBB	97.911% @	1101	39450	5.17	4.454	0.98901	4.405	Completed	Residential	Residenti	Alpine	San Diego	CA	91901	8/26/2011		9/16/	
26	SD-CSI-02413	CCSE	Small Con	\$1.90 per	EPBB	Step 4	13488	62468.51	8.424	7.132	0.99542	7.099	Completed	Residential	Residenti	Alpine	San Diego	CA	91901	4/13/2009	4/15/2009	4/20/	
27	SD-CSI-01611	CCSE	Small Con	\$2.20 per	EPBB	Step 3	12685	51385.83	6.825	6.112	0.943345	5.766	Completed	Residential	Residenti	Alpine	San Diego	CA	91901	9/10/2008	9/17/2008	9/29/	
28	SD-CSI-13682	CCSE	Small Con	\$0.20 per	EPBB	Step 10	1346	39789	7.848	6.944	0.96948	6.732	Cancelled	Commercial	Residenti	Alpine	San Diego	CA	91901	7/16/2012		7/31/	
29	SD-CSI-12794	CCSE	Small Con	\$0.20 per	EPBB	Step 10	1043	24473	6.11	5.237	0.99627	5.217	Completed	Residential	Residenti	ALPINE	San Diego	CA	91901	5/8/2012		5/14/	
30	SD-CSI-00533	CCSE	Small Con	\$2.50 per	EPBB	Step 2	8451	31858.33	4.008	3.389	0.99742	3.38	Withdrawn	Residential	Residenti	Alpine	San Diego	CA	91901	10/29/2007	10/29/2007	10/29/	
31	SD-CSI-06826	CCSE	Small Con	\$0.65 per	EPBB	Step 7	2429	32395	4.84	4.123	0.90638	3.737	Completed	Commercial	Residenti	Alpine	San Diego	CA	91901	8/2/2010	8/2/2010	8/2/	
32	SD-CSI-10480	CCSE	Small Con	\$0.25 per	EPBB	Step 9a	572	23700	2.88	2.506	0.91245	2.286	Completed	Residential	Residenti	Alpine	San Diego	CA	91901	8/5/2011		10/7/	
33	SD-CSI-09062	CCSE	Small Con	\$0.35 per	EPBB	Step 8a	1125	34076	3.68	3.261	0.98604	3.215	Completed	Residential	Residenti	Alpine	San Diego	CA	91901	5/13/2011		5/27/	
34	SD-CSI-15230	CCSE	Small Con	\$0.20 per	EPBB	Step 10	1540	42330	9.156	8.102	0.95052	7.701	Confirmed Reservat	Commercial	Residenti	Alpine	San Diego	CA	91901	10/19/2012		10/23/	
35	SD-CSI-02556	CCSE	Small Con	\$0.26 per	FiveYearP	Step 4	22463	85000	11.48	10.167	0.97005	9.862	PBI - In Payment	Residential	Residenti	Alpine	San Diego	CA	91901			4/28/	
36	SD-CSI-08724	CCSE	Small Con	\$0.35 per	EPBB	Step 8a	779	22445	2.7	2.349	0.94763	2.226	Completed	Residential	Residenti	Alpine	San Diego	CA	91901	4/12/2011		4/12/	
37	SD-CSI-10484	CCSE	Small Con	\$0.25 per	EPBB	Step 9a	602	27980	2.82	2.441	0.98654	2.408	Completed	Residential	Residenti	Alpine	San Diego	CA	91901	10/7/2011		10/7/	
38	SD-CSI-00662	CCSE	Small Con	\$0.25 per	EPBB	Step 3	9520	29697.05	4.56	3.808	0.99898	3.804	Cancelled	Residential	Residenti	Alpine	San Diego	CA	91901	12/3/2007	1/10/2008	1/21/	

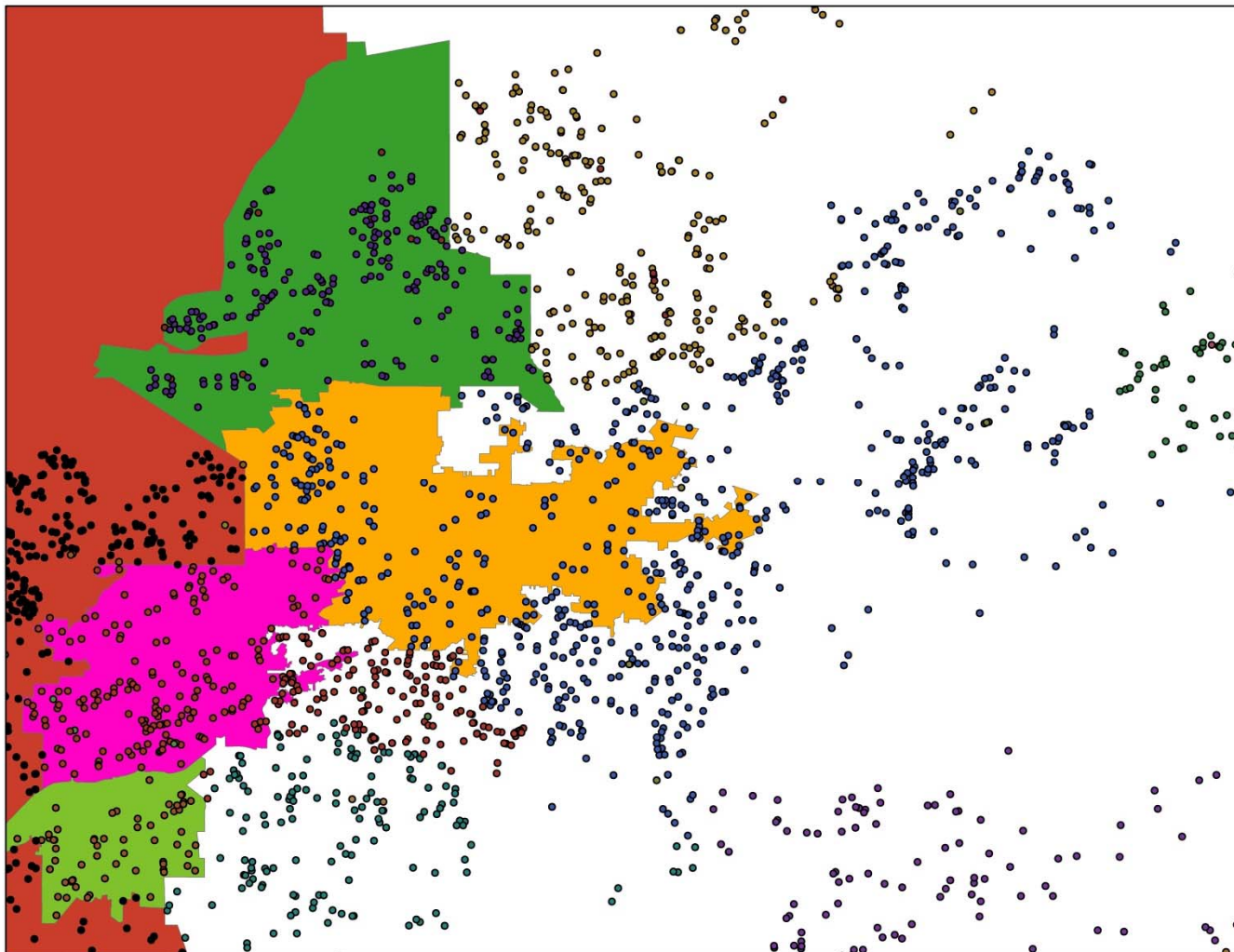
Spatial Anonymization

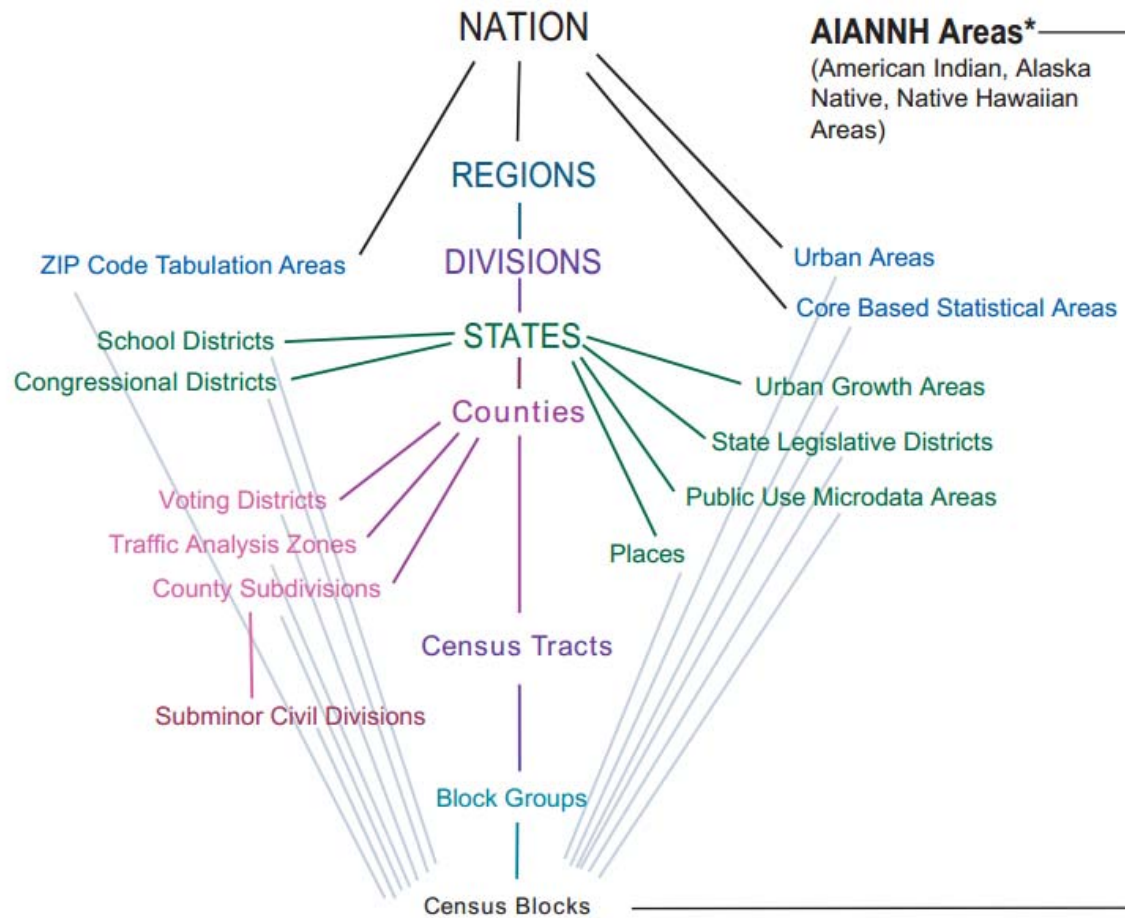
- Spatial anonymization, options and implications:
 - Postal and jurisdictional boundaries (Zip+4, Zip Code, City, County)
 - Easily understood
 - Already exist in the data
 - Sometimes incorrect or outdated
 - Census delineated boundaries (Block, Block Group, Tract, ZCTA)
 - Non-intuitive
 - Hierarchical
 - Spatially and temporally consistent

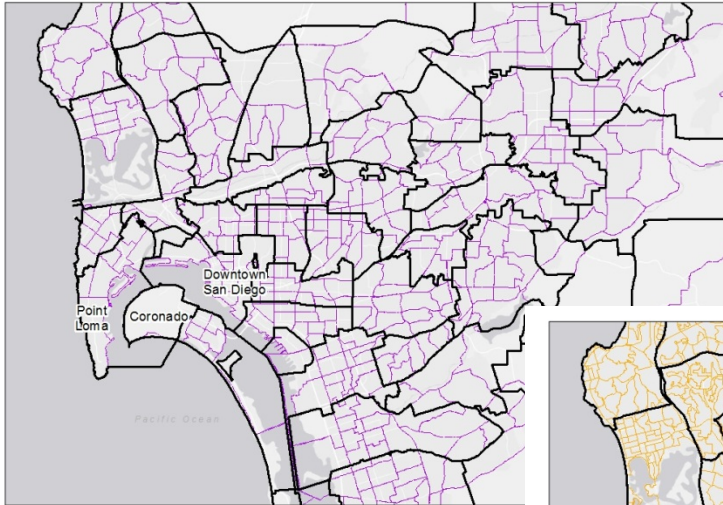
Place Name vs. Actual Place

PowerClerk	Res #	Res kW	Non-Res #	Non-Res kW
Carlsbad	460	2144	14	1707
Chula Vista	386	1371	28	3562
Coronado	94	356	4	113
Del Mar	130	641	1	1008
El Cajon	740	3788	13	1566
Encinitas	337	1515	5	186
Escondido	813	4037	34	2943
Imperial Beach	64	177	1	4
La Mesa	332	1390	8	2551
Lemon Grove	59	212	3	446
National City	30	98	2	327
Oceanside	354	1283	9	1710
Poway	614	3943	12	1366
San Diego	4809	17417	174	17416.856
San Marcos	431	1388	7	1833
Santee	211	817	13	1623
Solana Beach	95	413	7	47
Vista	391	1778	14	665
Unincorporated	2723	14529	76	16459
	13,0	57,2		55,5
	73	99	425	35

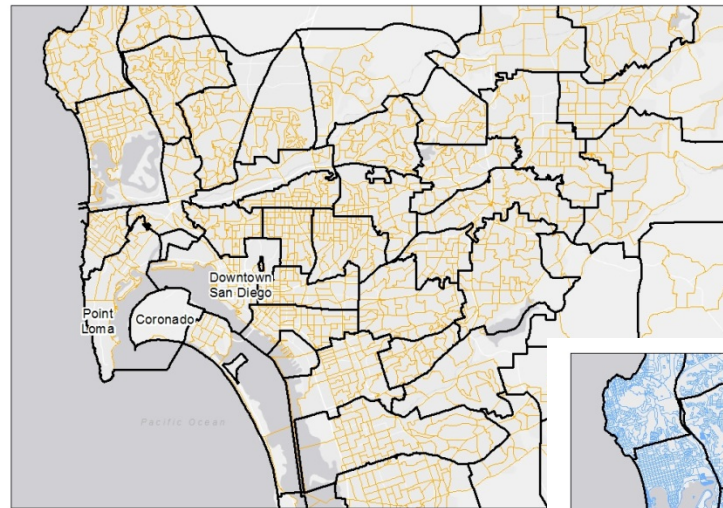
GIS	Res #	Res kW	Non-Res #	Non-Res kW
Carlsbad	466	2181	14	1707
Chula Vista	409	1500	27	3515
Coronado	96	362	4	113
Del Mar	37	183	1	1008
El Cajon	219	927	9	838
Encinitas	396	1735	5	186
Escondido	427	1870	22	2566
Imperial Beach	63	176	1	4
La Mesa	184	630	7	1598
Lemon Grove	60	219	3	446
National City	30	100	2	327
Oceanside	360	1322	9	1710
Poway	608	3901	12	1366
San Diego	4801	17341	176	25292
San Marcos	392	1204	5	823
Santee	213	829	14	1670
Solana Beach	99	444	7	47
Vista	220	847	13	641
Unincorporated	3994	21530	99	12124
	13,0	57,3	4	55,9
	74	01	30	80



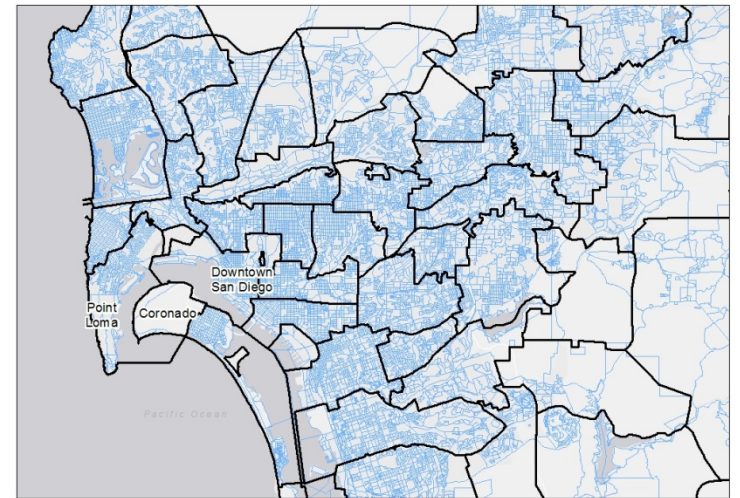




Zip Codes Census Tracts

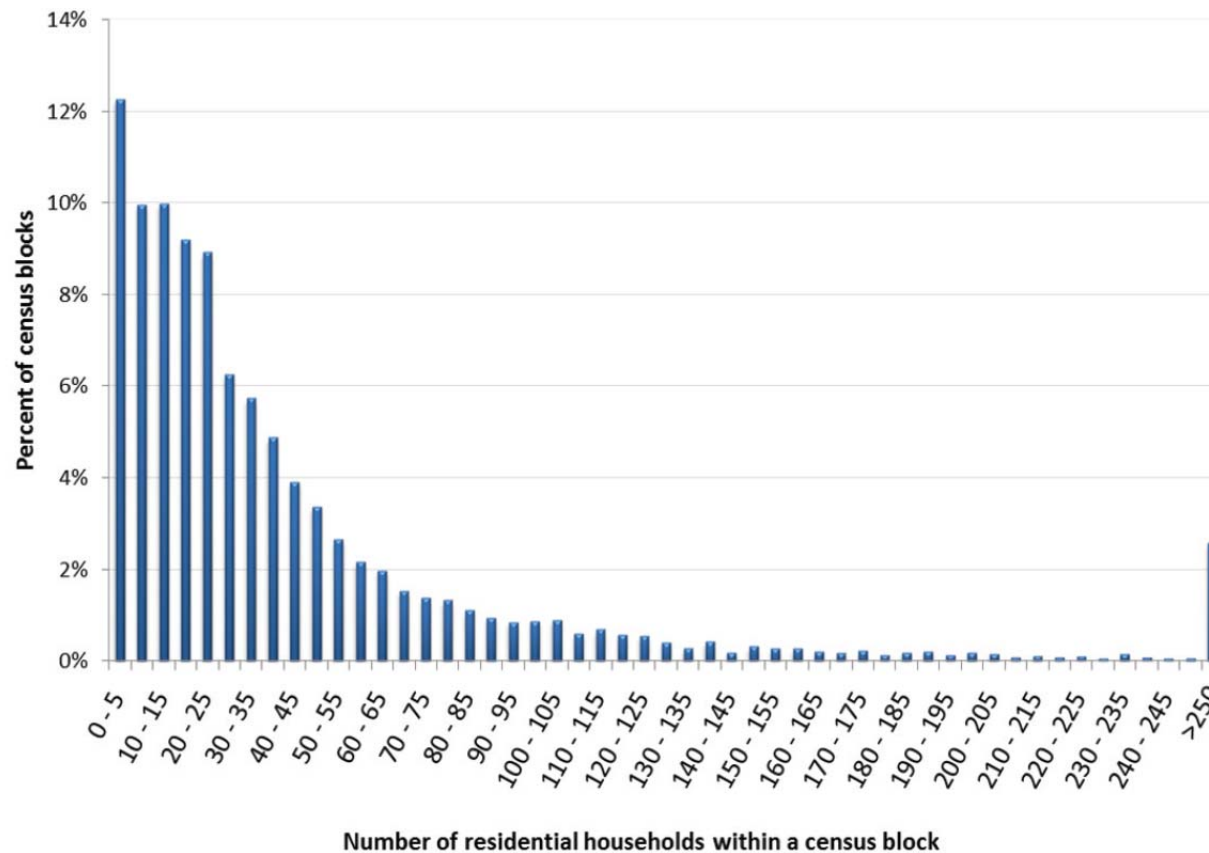


Zip Codes Census Block Group

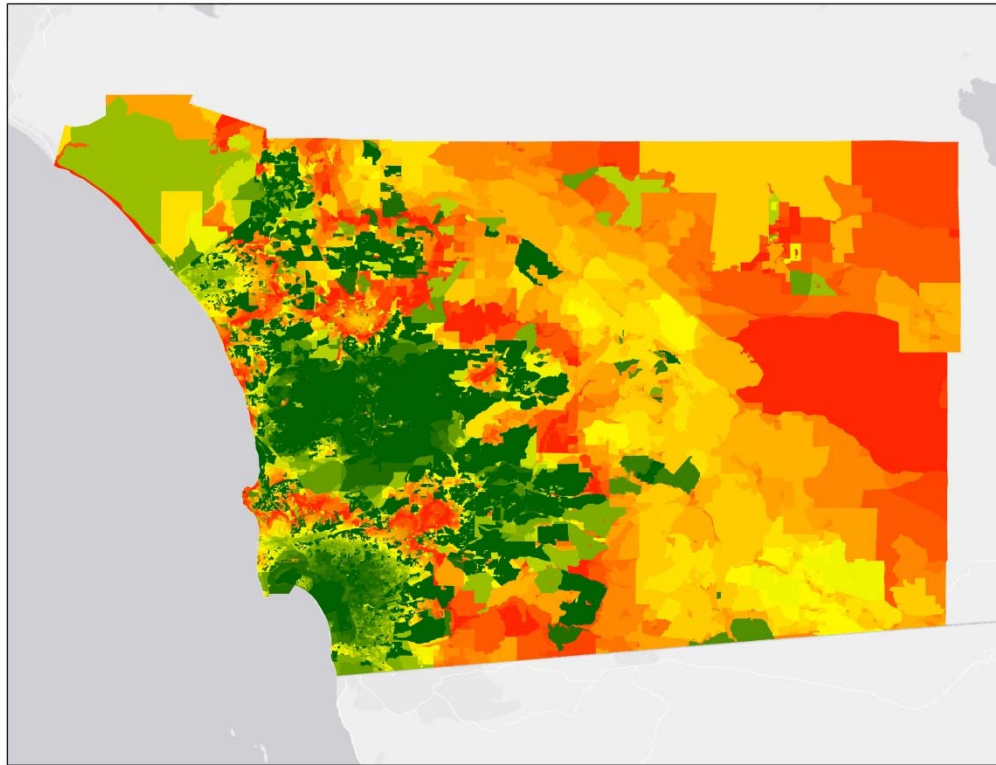


Zip Codes Census Blocks

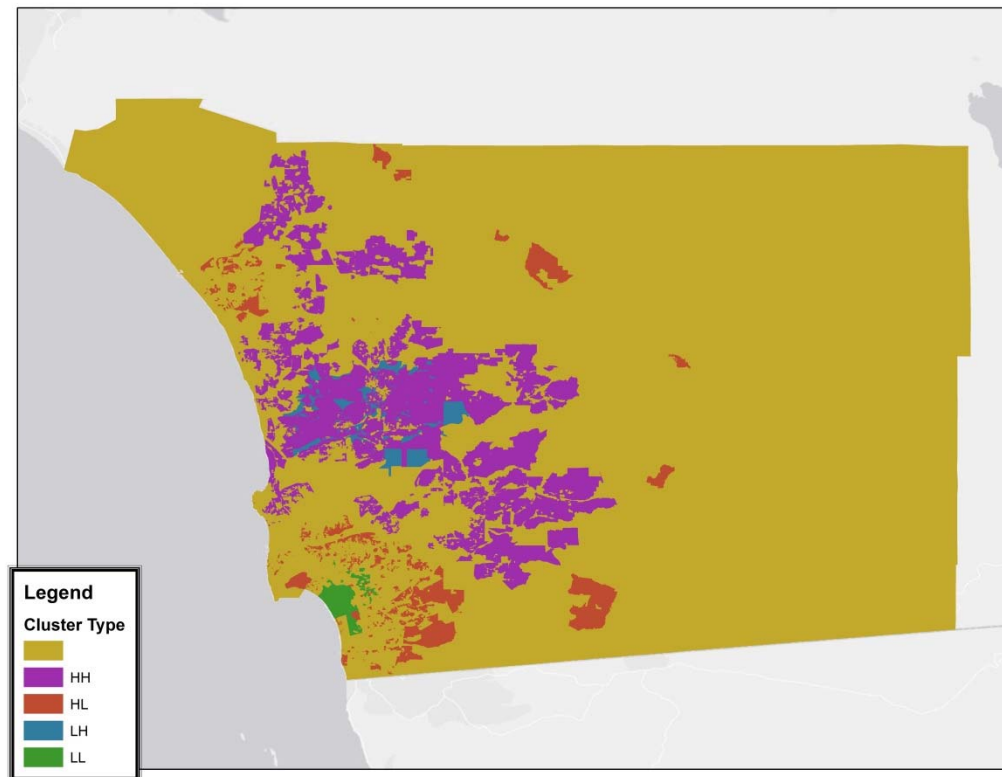
Housing Density at the Block Level



Solar Clustering San Diego County



Solar Clustering in San Diego County



Thank you

Contact

Timothy Treadwell
Senior Manager, Research & Analysis
timothy.treadwell@energycenter.org